

Leander Road, Brixton, SW2

2 bedroom flat - conversion for sale

£625,000

Leasehold

Property Details

A delightful two double bedroom Victorian apartment with a South-East facing garden. Packed full of modern elegance, the property features an expansive open-plan reception room with a contemporary kitchen running along one wall, a fantastic entertaining space for gatherings with family and friends. Bathed in natural light, this inviting room has an airy ambience enhanced by multiple skylights and bi-folding doors, creating a seamless transition to the private garden. The South-East facing garden is a low-maintenance suntrap, paved for ease of upkeep, allowing you to spend more time enjoying the outdoors rather than tending to a lawn. To the opposing side of the home are two spacious double bedrooms, each offering unique charm - One beautifully framed by a lovely sash bay window, while the other has a quaint courtyard, perfect for letting in fresh air on relaxing weekend mornings. Set in the centre of the home, the bathroom is tastefully modern with a bathtub, overhead shower and storage. Additionally, a cellar, provides further storage.

Features

- Two double bedrooms
- South-East facing private garden
- Victorian conversion
- Flooded with natural light
- Great entertaining space
- Brixton and the Victoria line in strolling distance
- Brockwell Park a three-minute walk
- Herne Hill a ten-minute walk through the park
- Large brand supermarket nearby
- Chain-free

Council tax band C

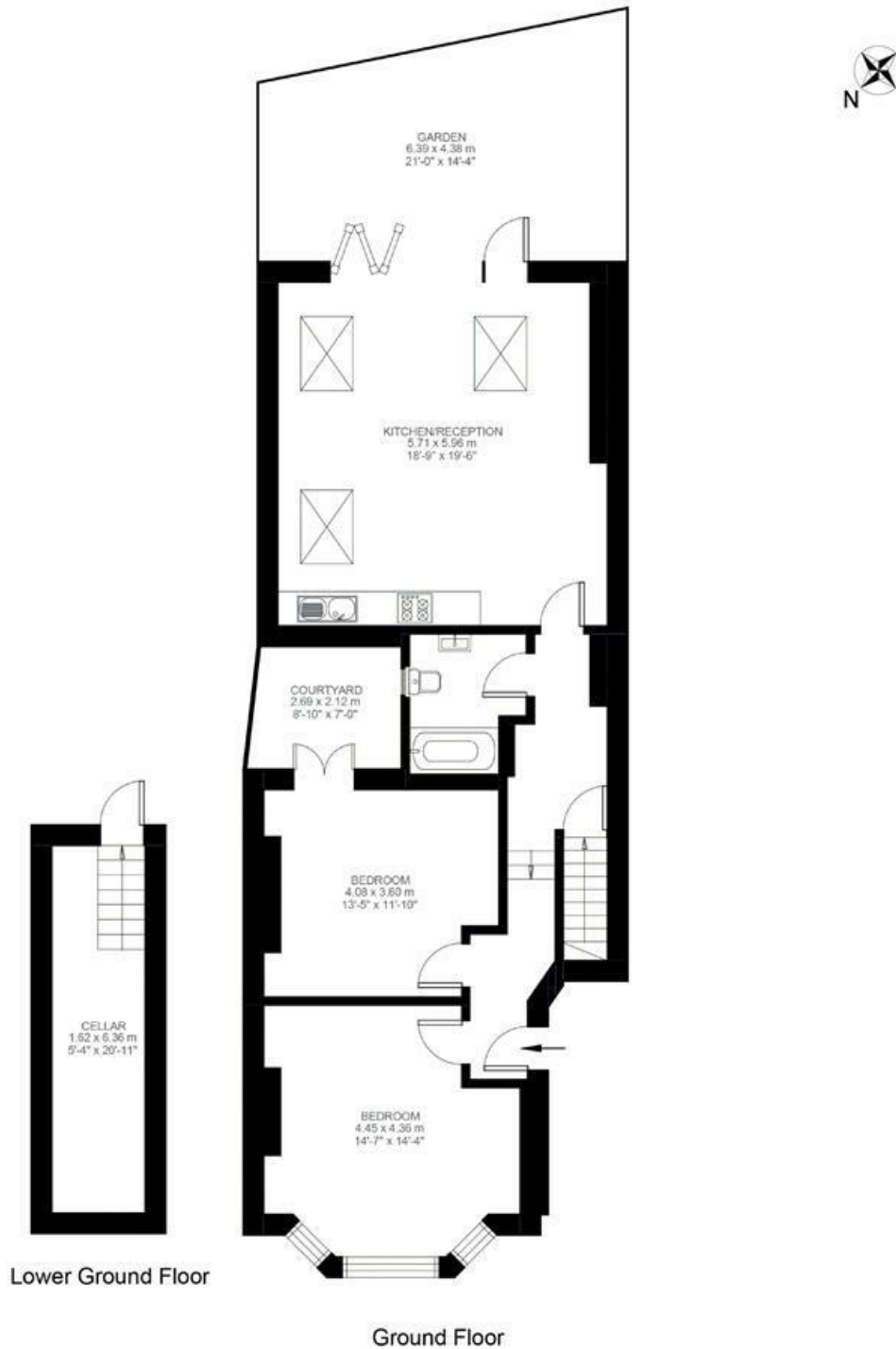
EPC rating C (72)



Leander Road, Brixton, SW2

Leander Road, SW2
2 Bedroom Flat

APPROXIMATE GROSS INTERNAL AREA: **1018 SQ FT / 95 SQ M**



While we try our very best, floor plans are produced as a guide only and we take no responsibility for the precise accuracy with which any property is represented.

Leander Road, Brixton, SW2

